

CHATCHAI

**SPECIFICATION
OIL IMMERSED TRANSFORMER
50 KVA. 1 Ph. 50 Hz
22000 - 460 / 230 V.**



CHATCHAI

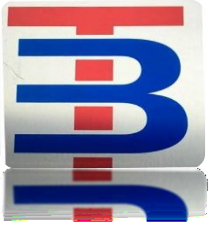
35/4 moo 8 Rd. thamai Krathumbean Samut sakhon 74110

Tel. 085-3151766 Tel & Fax 034-472665 E-mail : Samchai1962@gmail.com

Specification

Project .

Rated powerKVA	50	
Type of transformer	-	Oil immersed (Hermetically sealed)	
Standard	-	IEC 76	
Cooling System	-	ONAN	
No. Of phase	-	1	
FrequencyHz	50	
Rate of voltage : PrimaryV.	22000	
: SecondaryV.	460/230	
Vector group	-	Dyn 11	
Tapping Type	-	Off Circuit Tap Changer	
No. of steps	-	5	
Percentage of tapping	-	$\pm 2 \times 2.5 \%$	
Impedance voltage at 75 C%	4	
NO - Load current%	1	
Ambient temperatureC	40	
Average Temperature rise of windingC	65	
Average Temperature rise of top oilC	60	
Noise level not more thandB	56	
No - Load lossWatt	195	
Load loss at 75 CWatt	730	
Efficiency at P.F. = 1	: 25 % of rate power%	98.94
	: 50 % of rate power%	98.08
	: 75 % of rate power%	98.79
	: 100 % of rate power%	98.56
Voltage regulation	: at P.F. = 0.8%	3.22
	: at P.F. = 0.9%	2.71
	: at P.F. = 1.%	1.17
Impulse Withstand Voltage	: Primary windingKV.	125
	: Secondary windingKV.	-
Power Frequency	: Primary windingKV.	50
	: Secondary windingKV.	3
Terminal arrangement H.V. Side		Cable	
L.V. Side		Cable	
Installation on		Pole mounted / Platform	



CHATCHAI

35/4 moo 8 Rd. thamai Krathumban Samut sakhon 74110

Tel. 085-3151766 Tel & Fax 034-472665 E-mail : Samchai1962@gmail.com

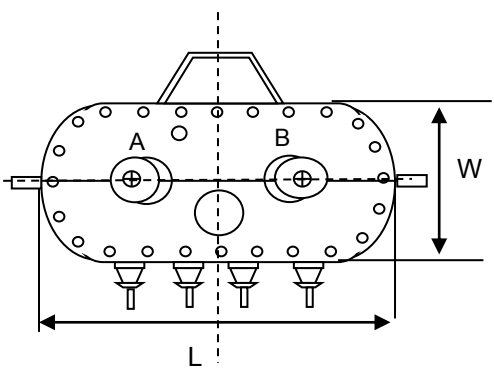
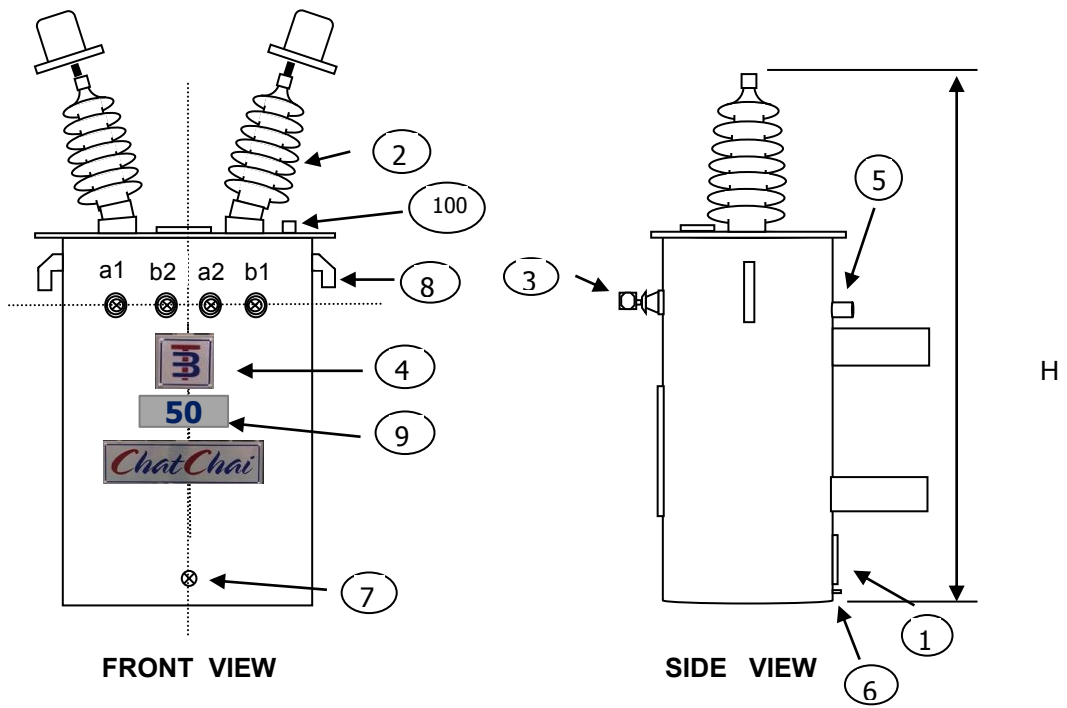
Tr ansformation

Qu

Cu

Project :

Rated power	50
Type of transformer	Oil immersed (Hermetically sealed)
Accessories	
H.V. Bushing with terminal connector	Included
L.V. Bushing with terminal connector	Included
Grounding pad or earth terminal	Included
upper fillter press sampling valve	Included
Oil drain, filter press sampling valve	Included
Name plate	Included
Arcing Horn	Included
Skid Base	Included
Mechanical pressure relief device	Included (without contact)
Oil level indicator	Included (with contact)
	Included (with contact)
	Included (with contact)
Testing	
- Routine test	
Ratio test at each position of tap	Included
Polarity and phase relation test	Included
Resistance measurement	Included
No - Load loss and exciting current test	Included
Impedance and load loss test	Included
Applied potential test	Included
Induced potential test	Included
Insulation resistance test	Included
Oil test	Included
- Specia test	
Impulse withstand test	Included (TR lab)
Temperature rise test	Included (TR lab)



TOP VIEW

NO	DESCRIPTION	QTY.
1	NAMEPLATE WITH CONNECTION DIAGRAM	1
2	HV. BUSHING W / TERMINAL CONNECTOR	3
3	LV. BUSHING W / TERMINAL CONNECTOR	4
4	TANK	1
5	TAP CHANGE	1
6	EARTH TERMINAL	1
7	OIL DRAIN VALAE	1
8	LIFTING EYES ON THE COVER	2
9	LOGO	1
10	THERMOMETER POCKET	1

CHATCHAI

Dimension in millimetres			Total wt.	Oil
H	L	W	(Kgs.)	(Litres)
1260 mm.	630 mm.	520 mm.	390	120
DESIGN No. 0150TR 5209001		S/O No. 1001203		
NAME		TITLE : OUTLINE DRAWING		
DRN.BY		50 kVA. 1 Ph.Dyn11		
CHK.BY		22000 - 460 / 230 v.		
APP. BY		TYPE : Hermetically sealed tank		

PRELIMINARY DRAWING

This drawing is for estimation only showing approximate dimensions and should not be used for actual purposes
 In case of order a definite drawing will be produced for formal approval